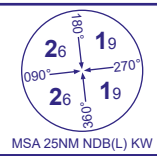


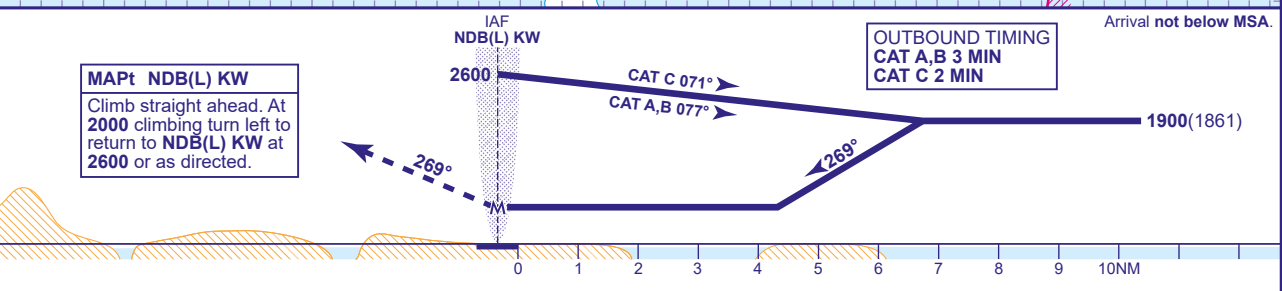
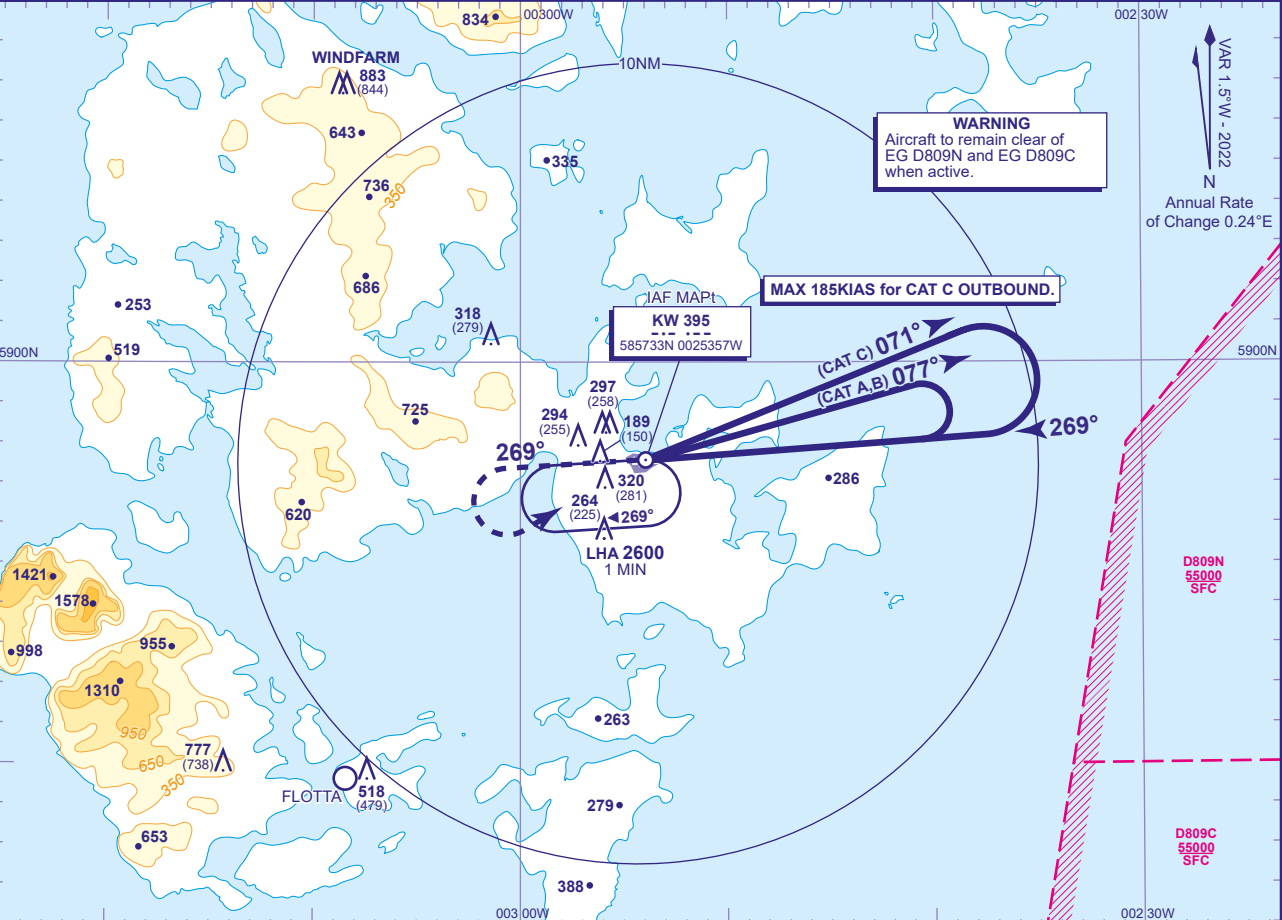
INSTRUMENT APPROACH CHART - ICAO

KIRKWALL NDB(L)  
RWY 27  
(ACFT CAT A,B,C)



APP	118.305	KIRKWALL APPROACH	AD ELEVATION	58
TWR	118.305	KIRKWALL TOWER	THR ELEVATION	39
AFIS	118.305	KIRKWALL INFORMATION	OBSTACLE ELEVATION	883 AMSL (844) (ABOVE THR)
ATIS	124.130	KIRKWALL INFORMATION	BEARINGS ARE MAGNETIC	

TRANSITION ALTITUDE  
3000



Aircraft Category		A	B	C	Rate of descent	G/S KT	160	140	120	100	80
OCA (OCH)	Procedure	680(641)	680(641)	680(641)		FT/MIN	990	870	740	620	500
	Total Area	650(592)	660(602)	1250(1192)							
VM(C)OCA (OCH AAL)	South of RWY 09/27	650(592)	660(602)	760(702)							

NOTE 1 FAT is parallel to RWY C/L but offset 136 metres north.

CHANGE (1/24): ATIS FREQUENCY REVISED.